



# GAT MONTHLY MEMBERSHIP PROGRESS REPORT

Results as of: 11/30/2023

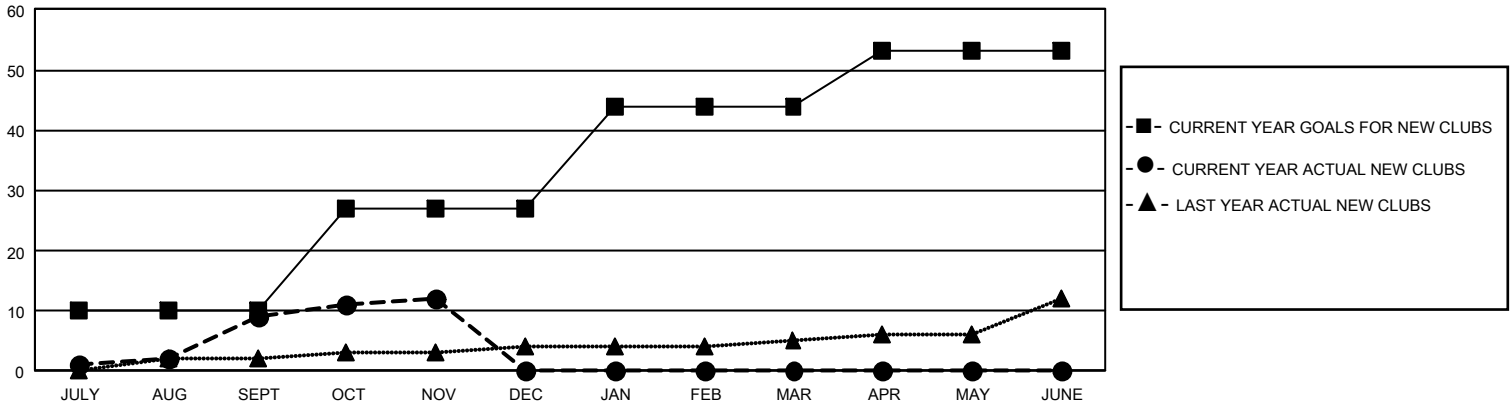
## GMT Constitutional Area 1, Group A

REPORT DOES NOT INCLUDE CLUBS IN UNDISTRICTED AREAS.

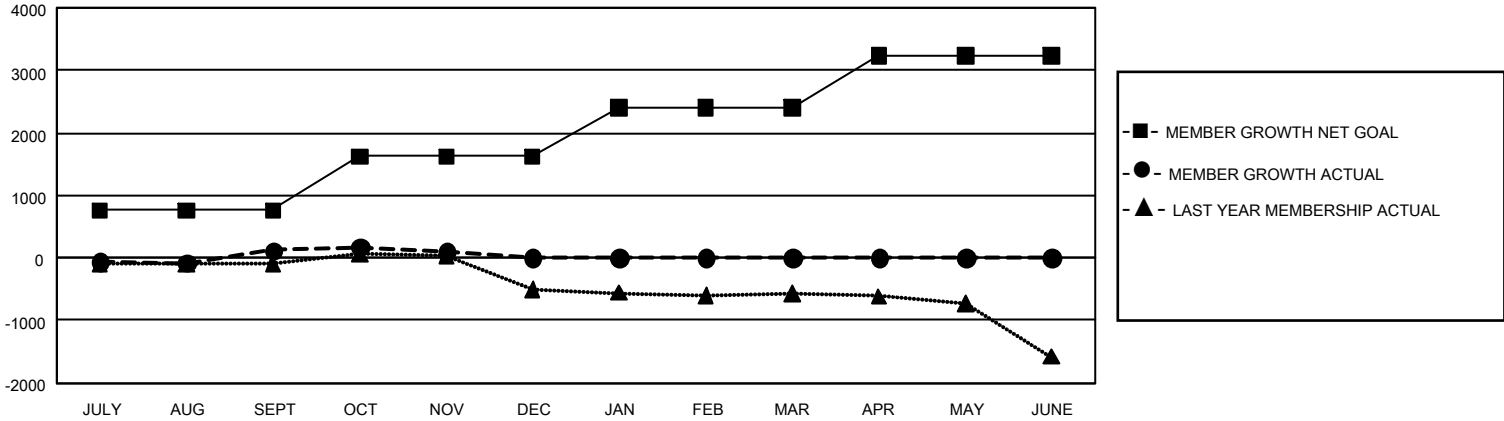
Clubs			
RESULTS FOR 2023-2024			
QUARTER	NEW CLUB GOAL	NEW CLUBS	DROPPED CLUBS
JULY/AUG/SEPT	30	9	11
OCT/NOV/DEC	51	3	5
JAN/FEB/MAR	51	0	0
APR/MAY/JUNE	27	0	0

Members			
RESULTS FOR 2023-2024			
QUARTER	MEMBER GROWTH NET GOAL	MEMBER GROWTH ACTUAL	DROPPED MEMBERS ACTUAL (including transfers)
JULY/AUG/SEPT	765	1,569	1,272
OCT/NOV/DEC	855	830	789
JAN/FEB/MAR	783	0	0
APR/MAY/JUNE	823	0	0

GOALS AND ACTUAL NEW CLUBS CUMULATIVE



GOALS AND ACTUAL MEMBERS CUMULATIVE



<b>DROPPED CLUBS: 16</b>	606 CLUBS OF 1,416 ADDED 1 OR MORE NEW MEMBERS	<b><u>GENDER DISTRIBUTION</u></b>	
		MALE 23,815 (63.33%) FEMALE 13,769 (36.62%) NON BINARY 6 (0.02%) PREFER NOT TO ANSWER 12 (0.03%)	
<b><u>DROPPED MEMBERS</u></b>		<a href="#">CLICK HERE FOR CUMULATIVE MEMBERSHIP DATA</a>	TOTAL FAMILY UNIT MEMBERS 6,026
DECEASED 204 CLUB CANCELLED 60 OTHER 1,795 <b>TOTAL 2,059</b>			FAMILY MEMBERS PAYING HALF DUES 3,082